

Solution Sheet

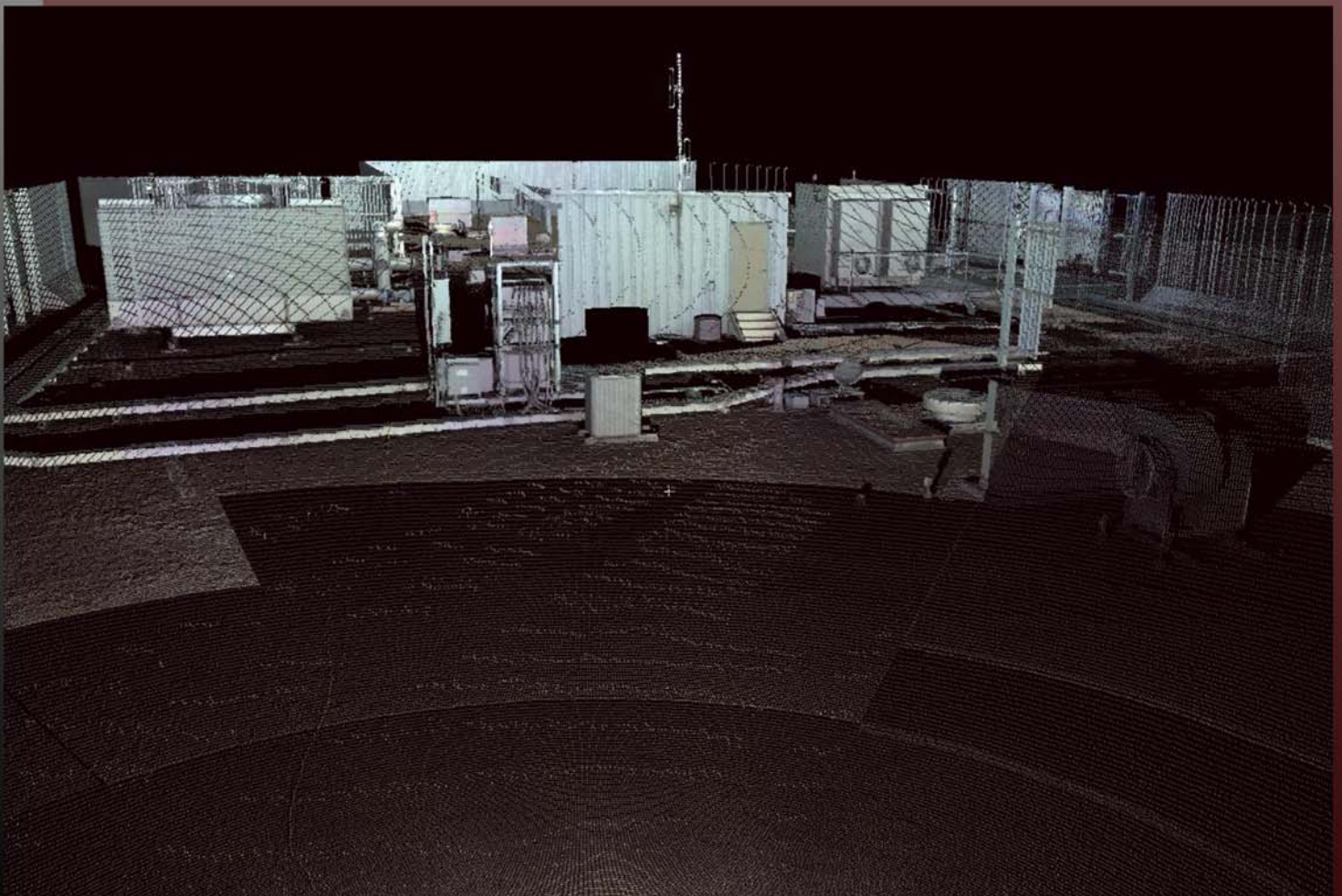
Research & Development



NEED: The use of building rooftops for cellular antennas continues to increase. As a result, the rooftops of prime locations are becoming quite crowded. In this case, the client needed an accurate map of the entire rooftop and all of the existing equipment so that the best location for their equipment could be determined.

SOLUTION: Scanning the rooftop allowed GDM to create the client requested drawings for determining the available space on this rooftop. However, the high definition of the collected points also allowed GDM to conduct virtual site walks through our GeoSim 3D interface. By using GeoSim 3D, representatives from multiple disciplines can view the site without having to leave their respective offices.

SPECIFICATIONS: Scanworlds- 3
Control- 6
Fieldtime- 4 Hours
Client- Verizon Wireless



Telecommunications - Rooftop Cell Compound (Addison, TX)